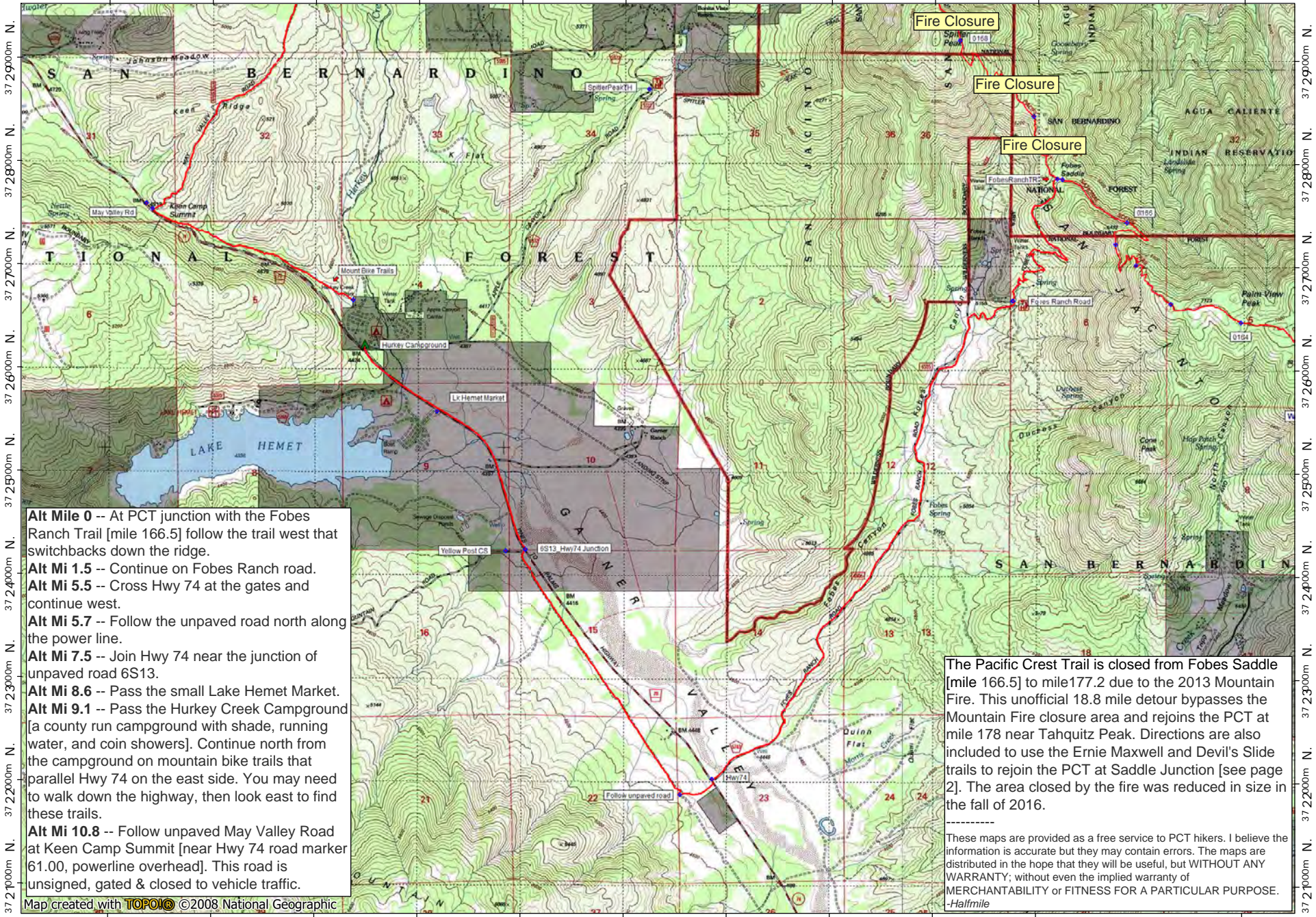


527000m E. 528000m E. 529000m E. 530000m E. 531000m E. 532000m E. 533000m E. 534000m E. 535000m E. 536000m E. WGS84 Zone 11S 538000m E.



3729000m N.  
3728000m N.  
3727000m N.  
3726000m N.  
3725000m N.  
3724000m N.  
3723000m N.  
3722000m N.  
3721000m N.

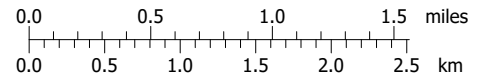
3729000m N.  
3728000m N.  
3727000m N.  
3726000m N.  
3725000m N.  
3724000m N.  
3723000m N.  
3722000m N.  
3721000m N.

**Alt Mile 0** -- At PCT junction with the Fobes Ranch Trail [mile 166.5] follow the trail west that switchbacks down the ridge.  
**Alt Mi 1.5** -- Continue on Fobes Ranch road.  
**Alt Mi 5.5** -- Cross Hwy 74 at the gates and continue west.  
**Alt Mi 5.7** -- Follow the unpaved road north along the power line.  
**Alt Mi 7.5** -- Join Hwy 74 near the junction of unpaved road 6S13.  
**Alt Mi 8.6** -- Pass the small Lake Hemet Market.  
**Alt Mi 9.1** -- Pass the Hurkey Creek Campground [a county run campground with shade, running water, and coin showers]. Continue north from the campground on mountain bike trails that parallel Hwy 74 on the east side. You may need to walk down the highway, then look east to find these trails.  
**Alt Mi 10.8** -- Follow unpaved May Valley Road at Keen Camp Summit [near Hwy 74 road marker 61.00, powerline overhead]. This road is unsigned, gated & closed to vehicle traffic.

The Pacific Crest Trail is closed from Fobes Saddle [mile 166.5] to mile 177.2 due to the 2013 Mountain Fire. This unofficial 18.8 mile detour bypasses the Mountain Fire closure area and rejoins the PCT at mile 178 near Tahquitz Peak. Directions are also included to use the Ernie Maxwell and Devil's Slide trails to rejoin the PCT at Saddle Junction [see page 2]. The area closed by the fire was reduced in size in the fall of 2016.

These maps are provided as a free service to PCT hikers. I believe the information is accurate but they may contain errors. The maps are distributed in the hope that they will be useful, but WITHOUT ANY WARRANTY; without even the implied warranty of MERCHANTABILITY or FITNESS FOR A PARTICULAR PURPOSE.  
 -Halfmile

Map created with **TOPOIC** ©2008 National Geographic

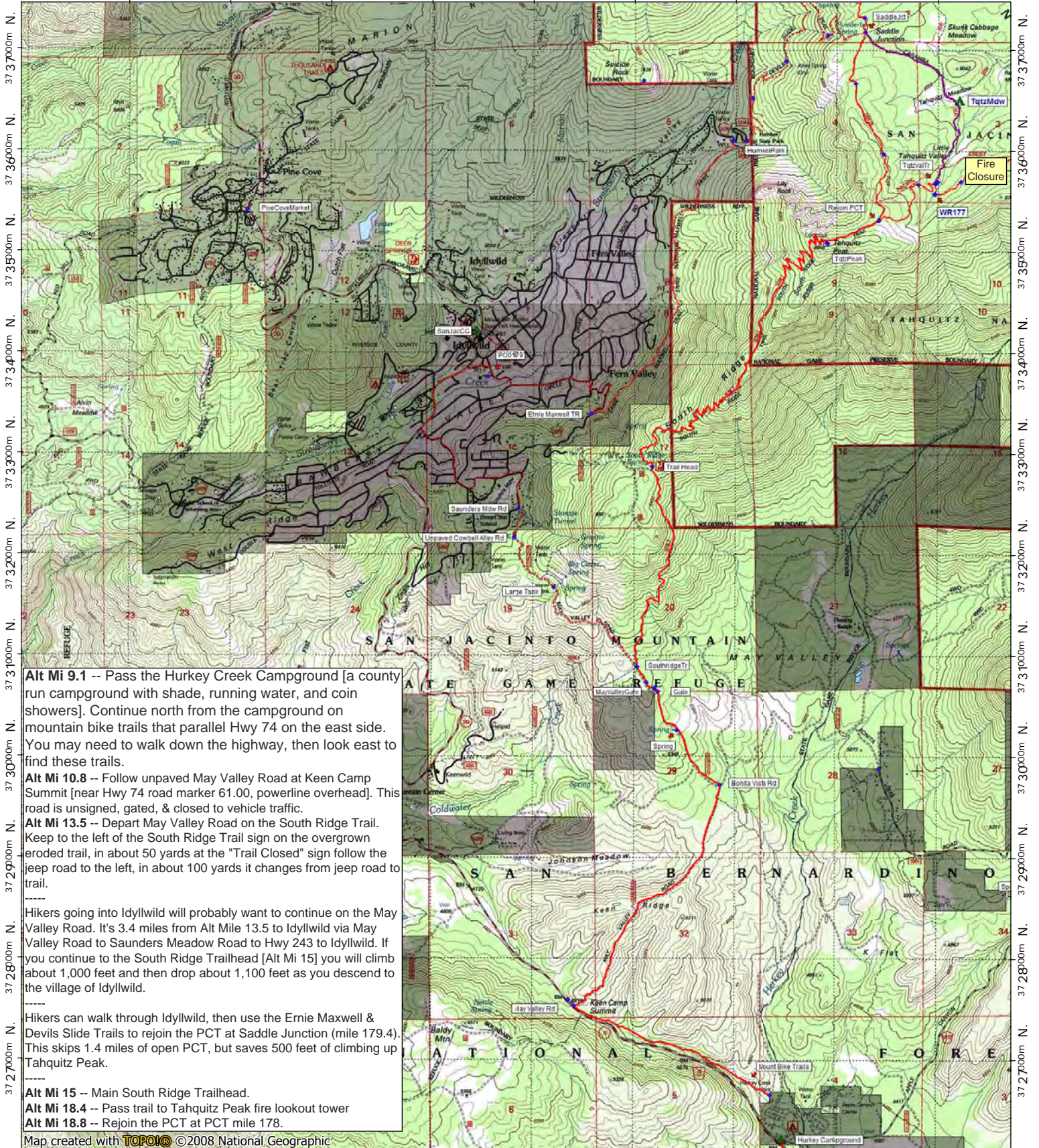


contour interval 40 feet  
 1:50,000  
 www.pctmap.net

TN MN  
 11 1/2°  
 12/01/16



523000m E. 524000m E. 525000m E. 526000m E. 527000m E. 528000m E. 529000m E. WGS84 Zone 11S 531000m E.



**Alt Mi 9.1** -- Pass the Hurkey Creek Campground [a county run campground with shade, running water, and coin showers]. Continue north from the campground on mountain bike trails that parallel Hwy 74 on the east side. You may need to walk down the highway, then look east to find these trails.

**Alt Mi 10.8** -- Follow unpaved May Valley Road at Keen Camp Summit [near Hwy 74 road marker 61.00, powerline overhead]. This road is unsigned, gated, & closed to vehicle traffic.

**Alt Mi 13.5** -- Depart May Valley Road on the South Ridge Trail. Keep to the left of the South Ridge Trail sign on the overgrown eroded trail, in about 50 yards at the "Trail Closed" sign follow the jeep road to the left, in about 100 yards it changes from jeep road to trail.

-----

Hikers going into Idyllwild will probably want to continue on the May Valley Road. It's 3.4 miles from Alt Mile 13.5 to Idyllwild via May Valley Road to Saunders Meadow Road to Hwy 243 to Idyllwild. If you continue to the South Ridge Trailhead [Alt Mi 15] you will climb about 1,000 feet and then drop about 1,100 feet as you descend to the village of Idyllwild.

-----

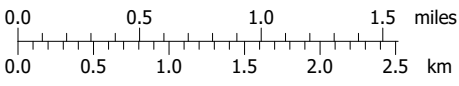
Hikers can walk through Idyllwild, then use the Ernie Maxwell & Devils Slide Trails to rejoin the PCT at Saddle Junction (mile 179.4). This skips 1.4 miles of open PCT, but saves 500 feet of climbing up Tahquitz Peak.

-----

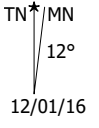
**Alt Mi 15** -- Main South Ridge Trailhead.  
**Alt Mi 18.4** -- Pass trail to Tahquitz Peak fire lookout tower  
**Alt Mi 18.8** -- Rejoin the PCT at PCT mile 178.

Map created with **TOPOM!** ©2008 National Geographic

523000m E. 524000m E. 525000m E. 526000m E. 527000m E. 528000m E. 529000m E. WGS84 Zone 11S 531000m E.



contour interval 40 feet  
 1:50,000  
 www.pctmap.net



12/01/16